

How to find your Dream Job?

CAREER

PETRONAS
School of Life

Curious
MIND

What does your Dream Job look like?

PETRONAS
School of Life



TALENT

WHAT YOU DO BEST?



PASSION

WHAT YOU LOVE TO DO MOST?



MISSION

WHAT RESULT DO YOU WANT TO PRODUCE?

Curious
MIND



My Dream Job!



Talent vs Passion

Identify Your Talent



- 1. What subject or activities did I excel in at school?*
- 2. What has always come easy for me?*
- 3. What do others compliment me on?*
- 4. What do others ask me for help on?*
- 5. Am I good at working with people, things, processes or ideas?*

Where are your Talents?

- Communicating
- Writing
- Public Speaking
- Designing
- Critical Thinking
- Creativity
- Processing Information
- Problem Solving
- Relating to People
- Socializing
- Memorizing
- Arts
- Dancing
- Math
- Cooking
- Sports
- Acting
- Singing
- Listening
- Comprehending
- Magic

WHAT DO I DO BEST?

1. _____

2. _____

3. _____

4. _____

5. _____

What does Passion look like?



- *Time will fly by when you're engaged in it.*
- *You'll look forward to it before you begin. In the middle of it, you'll feel exhilarated. And when you finish, you'll feel proud of whatever you created or produced.*
- *You won't mind "suffering" for it. You'll work hard for it, do whatever it takes to accomplish the task, and stay with it for the long run.*

WHAT DO LOVE TO DO MOST?

1. _____

2. _____

3. _____

4. _____

5. _____

MISSION / PURPOSE

What matters to you most?

PETRONAS
School of Life



- *Who are the people I want to help?*
- *What problem do they have?*
- *What is the solution to their problem that fires me up?*

Curious
MIND



Photo courtesy of Brunei Times

The Unstoppable Marathon Runner

Lt (L) Redzky Fadzillah bin Hj Mahmud

Lt Redzky is a marathon runner. In the last two years, he participated in almost every marathon run in Brunei. Standard Chartered, BHD, HSBC, Posl Ehsan and government sponsored runs. Lt Redzky tried not to miss any. Given the amount of training and effort that goes into preparing for a marathon, most runners aim to increase their distance, improve their timing and maybe even win a medal.

However, Lt Redzky went from running a full marathon to doing 5 kilometer runs at slower and slower times. The last race he completed was a 2.5km run just two weeks ago. But this time instead of running, he had to walk his way to the finish line with the help of a crutch. With every marathon, Lt Redzky accomplished something that was far greater than obtaining a medal - to him, it was another day of triumph over cancer.

Lt Redzky explained that running was a way to channel his anger with cancer and to get rid of his frustrations. Even though the physical demands took a toll on his body, he felt a great sense of relief afterwards. It helped to keep him calm. He made it his mission not to conceal his illness, but to "wear it on his sleeve". In fact the T-Shirt he wore on his frail body had the word "C-a-n-c-e-r" written boldly across it for everyone to see.

PETRONAS
School of Life



Figuring out your Purpose...



- What headlines or stories create great emotion in you and make you want to engage?
- Think of the people that inspire you. What qualities do they possess? What do they stand for?
- Think of your favorite movie, then the character you would play in that movie. Ask yourself why that character connects to you.

WHAT RESULT MATTERS MOST TO ME?

1. _____

2. _____

3. _____

4. _____

5. _____

PUTTING IT ALL TOGETHER

I am in my sweet spot when I use my TALENT of

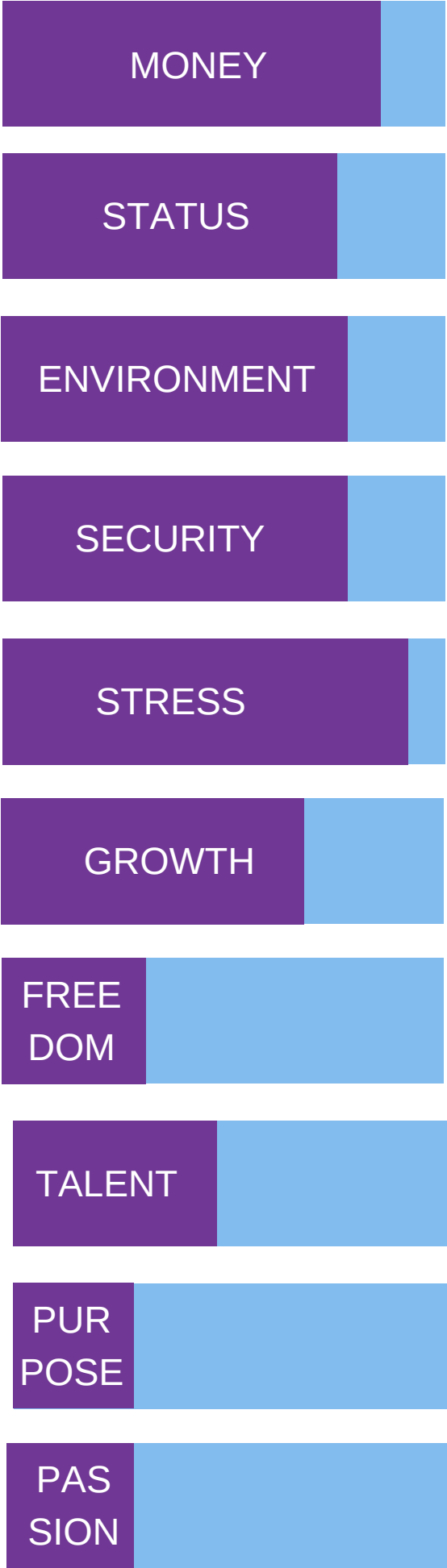
..... to

perform my PASSION for

..... to

accomplish my MISSION of

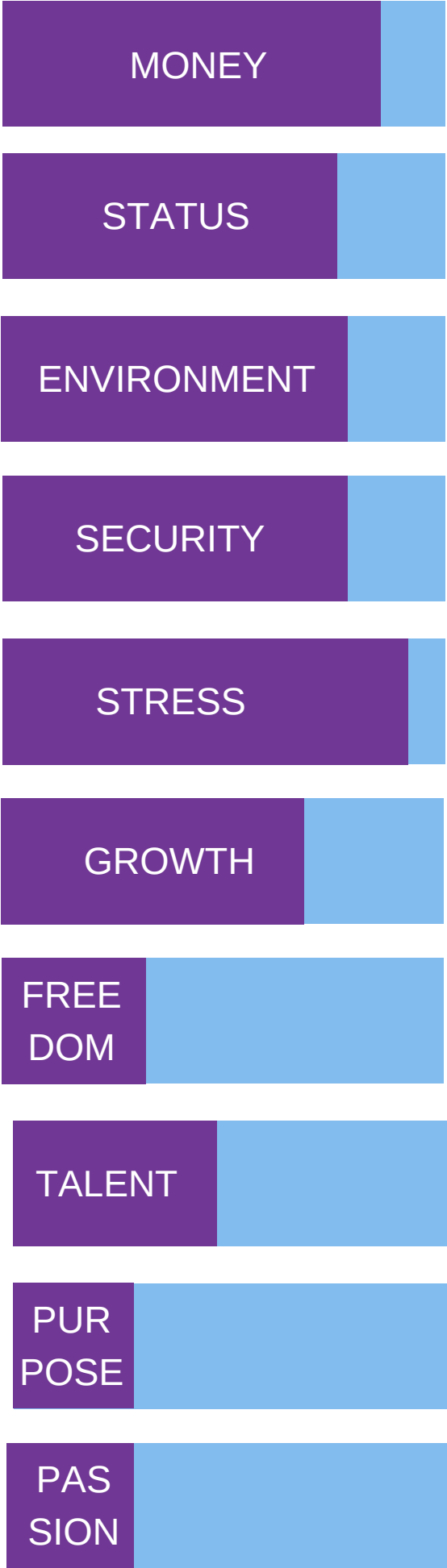
*EXAMPLE: I am in my sweet spot when I use my
TALENT of Music to perform my PASSION for working
with Children to accomplish my MISSION of
developing the next generation of happy musicians*



ACCOUNTANT VS MAGICIAN



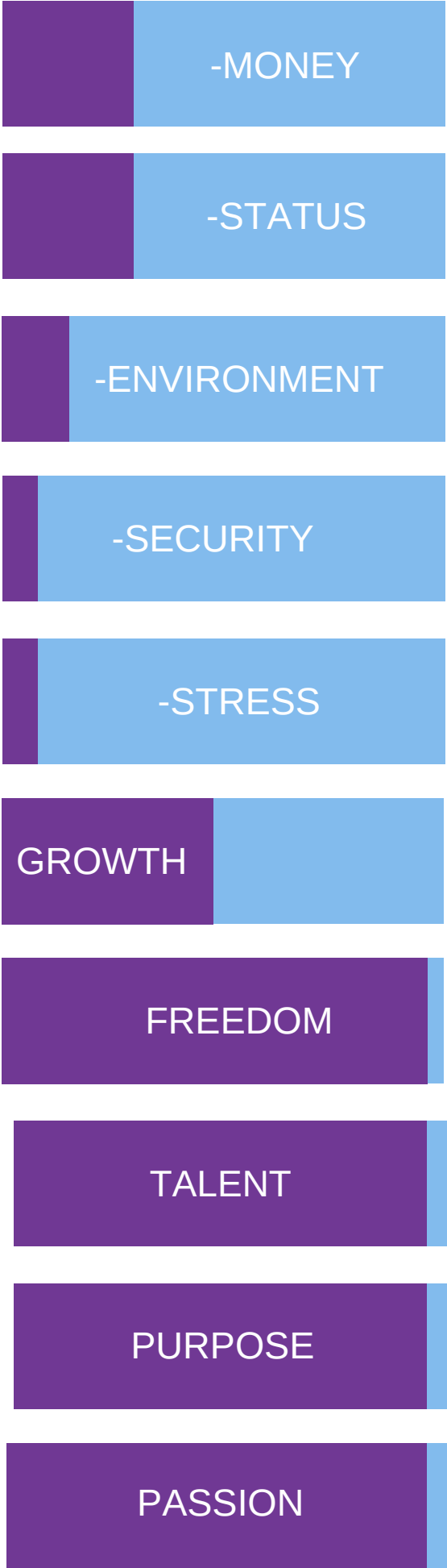
VINH GIANG



ACCOUNTANT VS MAGICIAN



VINH GIANG





ACCOUNTANT VS MAGICIAN

10 YEARS ON



VINH GIANG





DIRTY JOBS

with Mike Rowe

SHOULD YOU
PURSUE
YOUR
PASSION?

Video



Video 1

PETRONAS
School of Life

How to
bring
Passion
to
Work?

Curious
MIND



Your Next Step!

Get Qualified!

- *Education*
- *Conference / Workshop*
- *Read / Research / YouTube!*

Get Connected!

- *Build Relationships*
- *Buy Lunch!*
- *Network*
- *Entry Level Position*
- *Intern*
- *Volunteer*

When Connected...

What to ask?

- *How did you get to where you are today?*
- *What qualifications did you need and what did you learn on the job?*
- *What do you recommend I do to land a job similar to yours?*
- *What does winning look like at your company?*
- *What do you like and dislike about your position?*
- *Who else should I connect with?*
- *Will you connect me with them?*



PETRONAS
School of Life

Part 2

What Bosses Want?

Curious
MIND

Exercise

Break into a group of 5.

- *Imagine if you are the Head of Human Resource for PETRONAS employing new staff. List down a list of qualities of the candidates you would like to recruit.*
- *Identify how you would find clues during the interview on whether or not your candidate meets the criteria.*

10 Minutes Discussion - 2 Minutes Presentation

What Bosses Want?

The Dream Candidate

- *Coachable*
- *Likeable*
- *Proactive*
- *Intelligent*
- *Prepared*
- *Confident*
- *Diligent*
- *Ambitious*
- *Helpful*
- *Hungry*
- *Experienced*
- *Qualified*
- *Honest*
- *Respectful*
- *Resourceful*
- *Kind*
- *Positive*
- *Resilient*
- *Serious*
- *Purposeful*
- *Responsible*

How can you demonstrate these qualities?

The Dream Candidate

- *Coachable*
- *Likeable*
- *Proactive*
- *Intelligent*
- *Prepared*
- *Confident*
- *Diligent*
- *Ambitious*
- *Helpful*
- *Hungry*
- *Experienced*
- *Qualified*
- *Honest*
- *Respectful*
- *Resourceful*
- *Kind*
- *Positive*
- *Resilient*
- *Serious*
- *Purposeful*
- *Responsible*



PG HJH NOR'CAMELLIA PG HJ MOHIDDIN
HEAD OF HRM, STRATEGIC COMMUNICATIONS & ADMIN
PETRONAS CARIGALI BRUNEI LTD



How to Prepare for a Job Interview?

What you need to know

- *The company's history and story*
- *The company's vision, purpose and mission statement*
- *The company's values*
- *The company's products and services*
- *The company's big wins and awards*
- *The company's latest news*

Interview FAQ

- *Why do you want to work for us?*
- *What do you know about our company/this role?*
- *Why did you leave your previous job (or why do you want to leave your current job)?*
- *How can you contribute to our growth?*
- *What are your biggest strengths and weaknesses?*
- *Why should we hire you?*



PETRONAS
School of Life

How to Differentiate yourself?

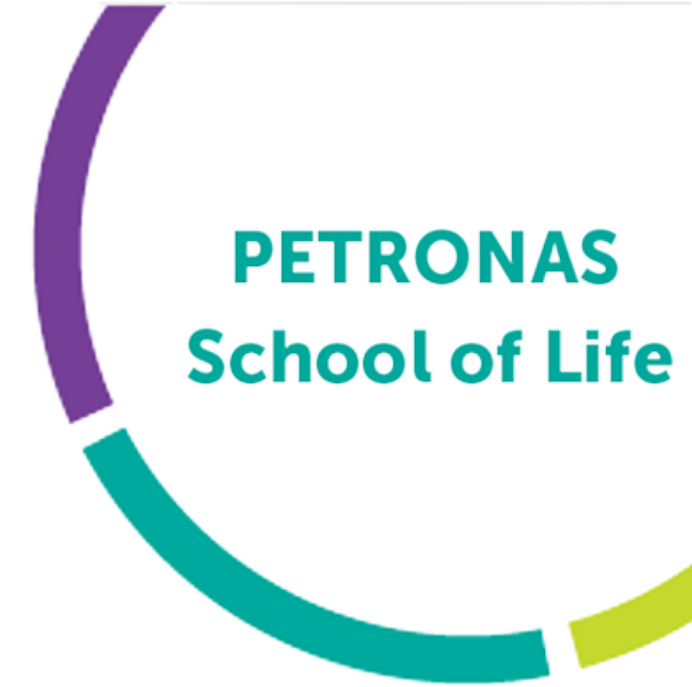
Curious
MIND

How to Differentiate yourself?

1. Don't Send a Resume
2. Send a handwritten Cover Letter!
3. Be Over Prepared
4. Demonstrate what other candidates don't!
5. Provide Customer's Insight
6. Think like the Boss
7. Show Hunger
8. Do Free
9. Send Thank You note!

Job Market

Part 3 Brunei's Job Market



What does
your Dream
Job look
like?



Name:

Ideal Job(s):

Industry:

Expected Starting Pay:

Matching Careers:

- 1.
- 2.
- 3.
- 4.
- 5.

| | |
|------------------|-----------|
| Income | ★ ★ ★ ★ ★ |
| Passion | ★ ★ ★ ★ ★ |
| Growth | ★ ★ ★ ★ ★ |
| Social Status | ★ ★ ★ ★ ★ |
| Impact | ★ ★ ★ ★ ★ |
| Expression | ★ ★ ★ ★ ★ |
| Work Environment | ★ ★ ★ ★ ★ |
| Freedom | ★ ★ ★ ★ ★ |
| Security | ★ ★ ★ ★ ★ |
| Stress | ★ ★ ★ ★ ★ |



Government

Government



Administrative Officer Trainee - B2 (\$2,200 to \$3,760)

Administrative Officer Grade I - B2 (\$2,200 to \$3,760)

Administrative Officer Special Grade - B3 (\$3,880 to \$4,240)

Senior Administrative Officer (Group 3) - Group 3 (\$4,750)

Senior Administrative Officer (Group 2) - Group 2 (\$5,400)

Senior Administrative Officer (Group 1) - Group 1 (\$5,900)

Senior Administrative Officer (Superscale C) - Superscale C (\$6,800)

Senior Administrative Officer (Superscale B) - Superscale B (\$8,000)

Senior Administrative Officer (Superscale A) - Superscale A (\$9,500)

Senior Administrative Officer (Superscale Special) - Superscale Special (\$11,000)

Deputy Permanent Secretary - \$11,000

Permanent Secretary (Grade C) - \$12,000

Permanent Secretary (Grade B) - \$15,000

Permanent Secretary (Grade A) - \$18,000

Government Servant

| | |
|------------------|-----------|
| Income | ★ ★ ★ ★ ☆ |
| Passion | ★ ☆ ☆ ☆ ☆ |
| Growth | ★ ★ ☆ ☆ ☆ |
| Social Status | ★ ★ ☆ ☆ ☆ |
| Impact | ★ ☆ ☆ ☆ ☆ |
| Expression | ★ ☆ ☆ ☆ ☆ |
| Work Environment | ★ ★ ☆ ☆ ☆ |
| Freedom | ★ ☆ ☆ ☆ ☆ |
| Security | ★ ★ ★ ★ ★ |
| Stress | ★ ★ ☆ ☆ ☆ |



Oil & Gas

Oil & Gas

| Industry | Position | Starting Pay | Experience |
|-----------------------------|----------------|-------------------|-------------------|
| Oil & Gas General | Marine Captain | \$7,000 - \$8,000 | |
| Oil & Gas MNC | Engineer | \$3,000 - \$3,500 | \$4,900 - \$6,900 |
| Oil & Gas Private Sector | Engineer | \$1,800 - \$2,200 | \$2.500 + Comm |
| Oil & Gas MNC | Admin | \$1,800 - \$2,200 | |
| Oil & Gas Private Sector | Admin | \$1,200 - \$1,800 | |

Oil & Gas Specialist

| | | | | | |
|--------------------|---|---|---|---|---|
| Income | ★ | ★ | ★ | ★ | ★ |
| Passion | ★ | ★ | ★ | ★ | ★ |
| Growth | ★ | ★ | ★ | ★ | ★ |
| Social Status | ★ | ★ | ★ | ★ | ★ |
| Impact / Influence | ★ | ★ | ★ | ★ | ★ |
| Expression | ★ | ★ | ★ | ★ | ★ |
| Work Environment | ★ | ★ | ★ | ★ | ★ |
| Freedom | ★ | ★ | ★ | ★ | ★ |
| Security | ★ | ★ | ★ | ★ | ★ |
| Stress | ★ | ★ | ★ | ★ | ★ |



Corporate

Law

| Industry | Position | Starting Pay | Experience |
|--------------|----------|-------------------|----------------|
| Private Firm | Lawyer | \$1,500 - \$1,800 | \$2.500 + Comm |



Lawyer

| | | | | | |
|------------------|---|---|---|---|---|
| Income | ★ | ★ | ★ | ★ | ★ |
| Passion | ★ | ★ | ★ | ★ | ★ |
| Growth | ★ | ★ | ★ | ★ | ★ |
| Social Status | ★ | ★ | ★ | ★ | ★ |
| Impact | ★ | ★ | ★ | ★ | ★ |
| Expression | ★ | ★ | ★ | ★ | ★ |
| Work Environment | ★ | ★ | ★ | ★ | ★ |
| Freedom | ★ | ★ | ★ | ★ | ★ |
| Security | ★ | ★ | ★ | ★ | ★ |
| Stress | ★ | ★ | ★ | ★ | ★ |

Finance Industry

Finance

| Industry | Position | Starting Pay | Experience |
|-----------|-----------|-------------------|-------------------|
| Bank | Executive | \$1,500 - \$2,800 | \$4,000 - \$6,000 |
| Insurance | Executive | \$1,500 - \$2,000 | \$4,000 - \$6,000 |

Pay Scales are Indicative figures based on preliminary survey only

Banker

| | |
|------------------|---|
| Income |  |
| Passion |  |
| Growth |  |
| Social Status |  |
| Impact |  |
| Expression |  |
| Work Environment |  |
| Freedom |  |
| Security |  |
| Stress |  |

Insurance Sales

| | | | | | |
|------------------|---|---|---|---|---|
| Income | ★ | ★ | ★ | ★ | ★ |
| Passion | ★ | ★ | ★ | ★ | ★ |
| Growth | ★ | ★ | ★ | ★ | ★ |
| Social Status | ★ | ★ | ★ | ★ | ★ |
| Impact | ★ | ★ | ★ | ★ | ★ |
| Expression | ★ | ★ | ★ | ★ | ★ |
| Work Environment | ★ | ★ | ★ | ★ | ★ |
| Freedom | ★ | ★ | ★ | ★ | ★ |
| Security | ★ | ★ | ★ | ★ | ★ |
| Stress | ★ | ★ | ★ | ★ | ★ |

Telco

| Industry | Position | Starting Pay | Experience |
|----------|----------|-------------------|------------|
| Telco | Graduate | \$2,200 - \$2,600 | |
| | | | |

Pay Scales are Indicative figures based on preliminary survey only

IT Specialists

| | | | | | |
|--------------------|---|---|---|---|---|
| Income | ★ | ★ | ★ | ★ | ★ |
| Passion | ★ | ★ | ★ | ★ | ★ |
| Growth | ★ | ★ | ★ | ★ | ★ |
| Social Status | ★ | ★ | ★ | ★ | ★ |
| Impact / Influence | ★ | ★ | ★ | ★ | ★ |
| Expression | ★ | ★ | ★ | ★ | ★ |
| Work Environment | ★ | ★ | ★ | ★ | ★ |
| Freedom | ★ | ★ | ★ | ★ | ★ |
| Security | ★ | ★ | ★ | ★ | ★ |
| Stress | ★ | ★ | ★ | ★ | ★ |

Private Sector

| Industry | Position | Starting Pay | Experience |
|----------------|--------------------|------------------|-------------------|
| Private Sector | IT / Programmer | \$8,00 - \$1,500 | \$2,500 - \$4,000 |
| Private Sector | Business Executive | \$800 - \$1,500 | \$2,500 - \$5,000 |
| Private Sector | Graphic Designer | \$700 - \$1,000 | \$1,800 - \$4,000 |

Pay Scales are Indicative figures based on preliminary survey only



Publishing

Journalist

| | |
|--------------------|-----------|
| Income | ★ ★ ☆ ☆ ☆ |
| Passion | ★ ★ ★ ★ ☆ |
| Growth | ★ ★ ★ ★ ★ |
| Social Status | ★ ★ ★ ☆ ☆ |
| Impact / Influence | ★ ★ ★ ★ ★ |
| Expression | ★ ★ ☆ ☆ ☆ |
| Work Environment | ★ ★ ☆ ☆ ☆ |
| Freedom | ★ ★ ★ ☆ ☆ |
| Security | ★ ★ ★ ★ ☆ |
| Stress | ★ ★ ★ ★ ☆ |

Publishing

| Industry | Position | Starting Pay | Experience |
|----------------|------------------|-----------------|-------------------|
| Private Sector | Journalist | \$1,200 | |
| Private Sector | Editor | | \$3,200 |
| Private Sector | Graphic Designer | \$700 - \$1,000 | \$1,800 - \$4,000 |

Pay Scales are Indicative figures based on preliminary survey only

Graphic Designer

| | |
|--------------------|-----------|
| Income | ★ ★ ☆ ☆ ☆ |
| Passion | ★ ★ ★ ★ ☆ |
| Growth | ★ ★ ☆ ☆ ☆ |
| Social Status | ★ ★ ☆ ☆ ☆ |
| Impact / Influence | ★ ★ ★ ☆ ☆ |
| Expression | ★ ★ ☆ ☆ ☆ |
| Work Environment | ★ ★ ★ ☆ ☆ |
| Freedom | ★ ★ ☆ ☆ ☆ |
| Security | ★ ★ ★ ★ ☆ |
| Stress | ★ ★ ★ ★ ☆ |



Education

Education

| Industry | Position | Starting Pay | Experience |
|-------------------|----------------------|--------------|--------------------------------|
| Government School | Teacher (Degree) | \$2,200 | Yearly + Performance Increment |
| Government School | Teacher (Non Degree) | \$1,100 | Yearly + Performance Increment |
| Private School | Teacher (Degree) | \$1,200 | |
| | | | |

Teacher / Lecturer

| | |
|--------------------|-----------|
| Income | ★ ★ ★ ★ ★ |
| Passion | ★ ★ ★ ★ ★ |
| Growth | ★ ★ ★ ★ ★ |
| Social Status | ★ ★ ★ ★ ★ |
| Impact / Influence | ★ ★ ★ ★ ★ |
| Expression | ★ ★ ★ ★ ★ |
| Work Environment | ★ ★ ★ ★ ★ |
| Freedom | ★ ★ ★ ★ ★ |
| Security | ★ ★ ★ ★ ★ |
| Stress | ★ ★ ★ ★ ★ |

Higher Education

| Industry | Position | Starting Pay | Experience |
|------------|---------------------|--------------|------------|
| University | Education Officer | \$2,630 | |
| University | Assistant Professor | \$4,130 | |
| University | Associate Professor | \$7,300 | |
| | Professor | \$8,800 | |



Healthcare Worker

Healthcare

| Industry | Position | Starting Pay | Experience |
|----------|--------------------|-----------------------------|---------------|
| General | Doctor | \$3,200 - \$4,000 | |
| General | Nurse | \$1,300 | |
| General | Fitness Instructor | \$500 - \$700 + 40% Comm | Up to \$3,000 |

Doctor

| | | | | | |
|------------------|---|---|---|---|---|
| Income | ★ | ★ | ★ | ★ | ★ |
| Passion | ★ | ★ | ★ | ★ | ★ |
| Growth | ★ | ★ | ★ | ★ | ★ |
| Social Status | ★ | ★ | ★ | ★ | ★ |
| Impact | ★ | ★ | ★ | ★ | ★ |
| Expression | ★ | ★ | ★ | ★ | ★ |
| Work Environment | ★ | ★ | ★ | ★ | ★ |
| Freedom | ★ | ★ | ★ | ★ | ★ |
| Security | ★ | ★ | ★ | ★ | ★ |
| Stress | ★ | ★ | ★ | ★ | ★ |

Nurses

| | |
|------------------|-----------|
| Income | ★ ★ ☆ ☆ ☆ |
| Passion | ★ ★ ★ ★ ☆ |
| Growth | ★ ★ ☆ ☆ ☆ |
| Social Status | ★ ★ ★ ☆ ☆ |
| Impact | ★ ★ ★ ★ ★ |
| Expression | ★ ★ ☆ ☆ ☆ |
| Work Environment | ★ ★ ☆ ☆ ☆ |
| Freedom | ★ ☆ ☆ ☆ ☆ |
| Security | ★ ★ ★ ★ ★ |
| Stress | ★ ★ ★ ★ ★ |



F&B

F&B

| Industry | Position | Starting Pay | Experience |
|----------|------------------|--------------|-------------------|
| F&B | Waiter / Manager | \$500 | \$1,500 - \$2,000 |
| F&B | Chef | \$800 | \$1,500 - \$3,000 |
| | | | |

Pay Scales are Indicative figures based on preliminary survey only

Chef

| | |
|--------------------|-----------|
| Income | ★ ★ ☆ ☆ ☆ |
| Passion | ★ ★ ★ ★ ☆ |
| Growth | ★ ★ ☆ ☆ ☆ |
| Social Status | ★ ★ ☆ ☆ ☆ |
| Impact / Influence | ★ ☆ ☆ ☆ ☆ |
| Expression | ★ ★ ★ ☆ ☆ |
| Work Environment | ☆ ☆ ☆ ☆ ☆ |
| Freedom | ★ ☆ ☆ ☆ ☆ |
| Security | ★ ★ ★ ★ ☆ |
| Stress | ★ ★ ★ ★ ★ |



Retail

Pay Scale for a Diploma Holder

| Industry | Position | Starting Pay | Experience |
|----------|------------------------------------|--------------|-------------------|
| Auto | Mechanic | \$600 | \$1,500 - \$3,000 |
| Beauty | Hair Dresser / Facial / Massage | \$600 + Comm | \$1,500 - \$2,500 |
| | | | |

Retail

| | |
|--------------------|-----------|
| Income | ★ ★ ☆ ☆ ☆ |
| Passion | ★ ★ ☆ ☆ ☆ |
| Growth | ★ ★ ☆ ☆ ☆ |
| Social Status | ★ ☆ ☆ ☆ ☆ |
| Impact / Influence | ★ ★ ☆ ☆ ☆ |
| Expression | ★ ☆ ☆ ☆ ☆ |
| Work Environment | ★ ★ ☆ ☆ ☆ |
| Freedom | ★ ☆ ☆ ☆ ☆ |
| Security | ★ ★ ★ ☆ ☆ |
| Stress | ★ ☆ ☆ ☆ ☆ |

Beauty: Hair Dresser/ Massage / Facial

| | |
|--------------------|-----------|
| Income | ★ ★ ☆ ☆ ☆ |
| Passion | ★ ★ ★ ☆ ☆ |
| Growth | ★ ★ ☆ ☆ ☆ |
| Social Status | ★ ☆ ☆ ☆ ☆ |
| Impact / Influence | ★ ★ ★ ☆ ☆ |
| Expression | ★ ★ ★ ☆ ☆ |
| Work Environment | ★ ★ ★ ★ ☆ |
| Freedom | ★ ☆ ☆ ☆ ☆ |
| Security | ★ ★ ★ ☆ ☆ |
| Stress | ★ ☆ ☆ ☆ ☆ |

Entrepreneur Start Up

| | |
|------------------|-----------|
| Income | ★ ★ ☆ ☆ ☆ |
| Passion | ★ ★ ★ ★ ☆ |
| Growth | ★ ★ ★ ★ ★ |
| Social Status | ★ ★ ☆ ☆ ☆ |
| Impact | ★ ★ ★ ★ ☆ |
| Expression | ★ ★ ★ ★ ★ |
| Work Environment | ★ ☆ ☆ ☆ ☆ |
| Freedom | ★ ★ ★ ★ ★ |
| Security | ★ ☆ ☆ ☆ ☆ |
| Stress | ★ ★ ★ ★ ★ |

Accomplished Entrepreneur

| | | | | | |
|------------------|---|---|---|---|---|
| Income | ★ | ★ | ★ | ★ | ★ |
| Passion | ★ | ★ | ★ | ★ | ★ |
| Growth | ★ | ★ | ★ | ★ | ★ |
| Social Status | ★ | ★ | ★ | ★ | ★ |
| Impact | ★ | ★ | ★ | ★ | ★ |
| Expression | ★ | ★ | ★ | ★ | ★ |
| Work Environment | ★ | ★ | ★ | ★ | ★ |
| Freedom | ★ | ★ | ★ | ★ | ★ |
| Security | ★ | ★ | ★ | ★ | ★ |
| Stress | ★ | ★ | ★ | ★ | ★ |



Airline

Airline

| Industry | Position | Starting Pay | Experience |
|----------|------------------|--------------|------------|
| Airline | Pilot | \$2,900 | \$5,660 |
| Airline | Flight Attendant | \$735 | \$2,130 |

Pay Scales are Indicative figures based on preliminary survey only

Pilot

| | |
|--------------------|---|
| Income |      |
| Passion |      |
| Growth |      |
| Social Status |      |
| Impact / Influence |      |
| Expression |      |
| Work Environment |      |
| Freedom |      |
| Security |      |
| Stress |      |



Construction

Construction

| Industry | Position | Starting Pay | Experience |
|--------------|---------------------------------|-------------------|------------|
| Construction | Architect | \$1,500 - \$2,000 | >\$5,000 |
| Construction | Trainee / Draftman / Supervisor | \$600 - \$800 | |
| Construction | Foreman | | >\$4,000 |
| Construction | Project Manager | | >\$10,000 |

Architect

| | |
|--------------------|-----------|
| Income | ★ ★ ★ ★ ☆ |
| Passion | ★ ★ ★ ★ ☆ |
| Growth | ★ ★ ★ ☆ ☆ |
| Social Status | ★ ★ ★ ★ ★ |
| Impact / Influence | ★ ★ ★ ☆ ☆ |
| Expression | ★ ★ ★ ★ ☆ |
| Work Environment | ★ ★ ★ ★ ☆ |
| Freedom | ★ ★ ☆ ☆ ☆ |
| Security | ★ ★ ★ ★ ★ |
| Stress | ★ ★ ★ ★ ★ |

Construction Worker

| | |
|--------------------|-------|
| Income | ★☆☆☆☆ |
| Passion | ★☆☆☆☆ |
| Growth | ★☆☆☆☆ |
| Social Status | ★☆☆☆☆ |
| Impact / Influence | ★☆☆☆☆ |
| Expression | ★☆☆☆☆ |
| Work Environment | ★☆☆☆☆ |
| Freedom | ★☆☆☆☆ |
| Security | ★★★★☆ |
| Stress | ★☆☆☆☆ |



Actor

Striving Actor / Artist

| | |
|--------------------|-------|
| Income | ★☆☆☆☆ |
| Passion | ★★★★★ |
| Growth | ★★☆☆☆ |
| Social Status | ★★☆☆☆ |
| Impact / Influence | ★★☆☆☆ |
| Expression | ★★★★★ |
| Work Environment | ★☆☆☆☆ |
| Freedom | ★★★★★ |
| Security | ★☆☆☆☆ |
| Stress | ★★★★☆ |

Famous Actor

| | | | | | |
|--------------------|---|---|---|---|---|
| Income | ★ | ★ | ★ | ★ | ★ |
| Passion | ★ | ★ | ★ | ★ | ★ |
| Growth | ★ | ★ | ★ | ★ | ★ |
| Social Status | ★ | ★ | ★ | ★ | ★ |
| Impact / Influence | ★ | ★ | ★ | ★ | ★ |
| Expression | ★ | ★ | ★ | ★ | ★ |
| Work Environment | ★ | ★ | ★ | ★ | ★ |
| Freedom | ★ | ★ | ★ | ★ | ★ |
| Security | ★ | ★ | ★ | ★ | ★ |
| Stress | ★ | ★ | ★ | ★ | ★ |



Social Media Influencer

Striving Social Media Influencer

| | |
|--------------------|-------|
| Income | ★☆☆☆☆ |
| Passion | ★★★★★ |
| Growth | ★★★★☆ |
| Social Status | ★☆☆☆☆ |
| Impact / Influence | ★☆☆☆☆ |
| Expression | ★★★★★ |
| Work Environment | ★☆☆☆☆ |
| Freedom | ★★★★★ |
| Security | ★☆☆☆☆ |
| Stress | ★★★★★ |

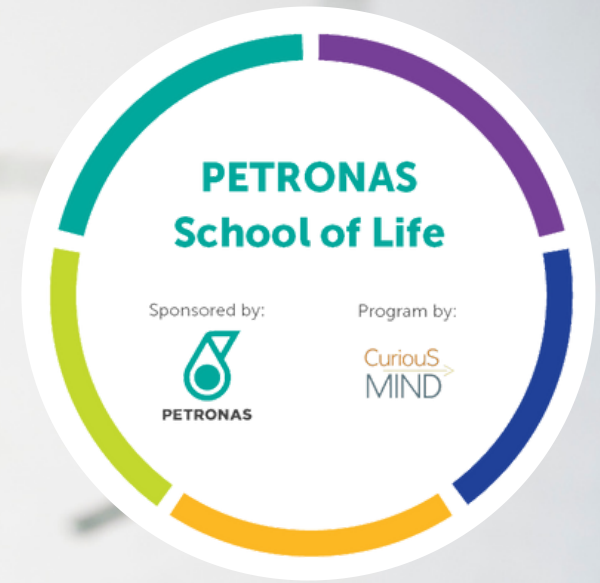
Successful Social Media Influencer

| | | | | | |
|--------------------|---|---|---|---|---|
| Income | ★ | ★ | ★ | ★ | ★ |
| Passion | ★ | ★ | ★ | ★ | ★ |
| Growth | ★ | ★ | ★ | ★ | ★ |
| Social Status | ★ | ★ | ★ | ★ | ★ |
| Impact / Influence | ★ | ★ | ★ | ★ | ★ |
| Expression | ★ | ★ | ★ | ★ | ★ |
| Work Environment | ★ | ★ | ★ | ★ | ★ |
| Freedom | ★ | ★ | ★ | ★ | ★ |
| Security | ★ | ★ | ★ | ★ | ★ |
| Stress | ★ | ★ | ★ | ★ | ★ |

Zoom Interview

2.2

**CAREER
DIRECTION**



How to align
your Strength and
Passion with your
Career Direction?



Interview Guest | David O'Hagan
(Zoom)



CuriousMind.biz/feedback